

X-TREME, X-PERT
CLASS III NFPA 2500 (1983) - 2022

Manufacture: TASK

Cod.: 10.967.528/0001-98

Product name: X-TREME, X-PERT

Cod.: TC-0029XPT (ML), TC-0030XPT (XL), TC-0031XPT (S)

Full-body fall arrest and positioning

This product must not be exposed to temperatures -40°C or above $+80^{\circ}\text{C}$. Exposure of the harness to direct flame or temperatures beyond these limits could cause the harness to fall. Take care to protect the harness from such exposure during use, transport, storage, etc.

Read this notice carefully and keep it in a permanent record for reference after it is removed from the harness. Any user of the harness should be provided with a copy of this notice for reference before and after each use.

Additional information regarding life safety harness can be found in NFPA 1500 and 1858 and 1983, incorporated in the 2022 edition of NFPA 2500.

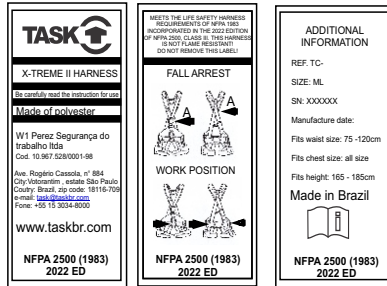


TECHNICAL NOTICE
X-TREME, X-PERT
HARNESSES



www.taskbr.com

Traceability and marking



Manufacture informations

Use informations

Other's informations



a. Code identification

c. Resistance indication

b. Standards

d. Traceability

Carabiner Master D Auto

25 kN

9 kN

9 kN

23 mm

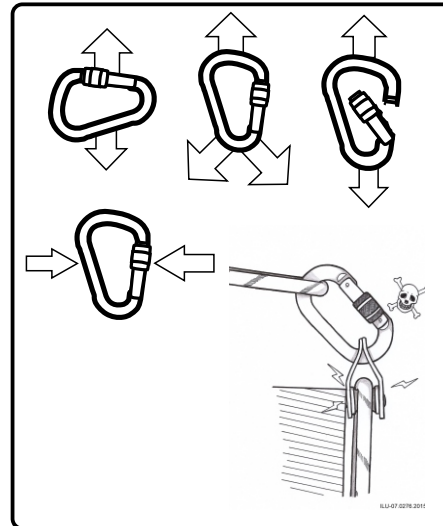
SYMBOLS!

- Read the manual.
- Attention.
- Damage risk.
- Inspection necessary.

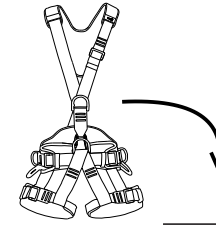
ALERT!

Read the instruction before and after each use the equipment. Make a inspection before and after each use.

WARNING!



SIZE!



	S	ML	XL
Legs size	50 - 65	55 - 75	55 - 80
Waist size	65 - 100	75 - 120	85 - 140
First height	140 - 165	165 - 180	180 - 190

Sizes in cm



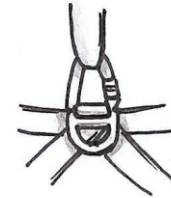
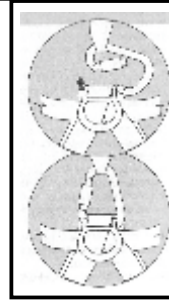
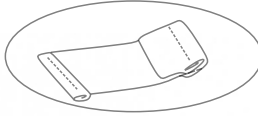
NFPA CERTIFICATION

CARABINER AND SNAP LINK USER INFORMATION.
MEETS THE CARABINER REQUIREMENTS OF NFPA 1983, INCORPORATED IN THE 2022 EDITION OF NFPA 2500.

After removing the instruction for use from the equipment, make a copy of it and keep the original as part of a permanent record that includes the usage and inspection history for the equipment. Keep the copy of the instruction for use with equipment and refer to it before and after each use. Additional information regarding auxiliary equipment can be found in NFPA 1500 and NFPA 1858 and NFPA 1983,

1. How to put the harness on

End of the strap must be sewn. Do not violate.

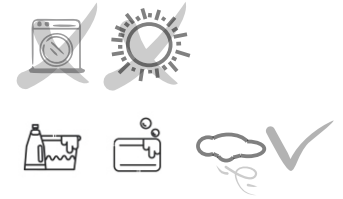


Automatic closing




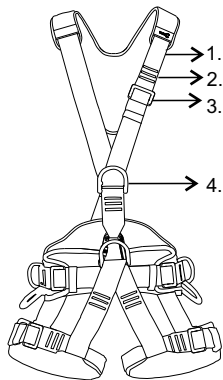
4. Cleaning

To clean the belt, use neutral detergent with balanced PH and scrub with a soft bristle brush. Leave to dry in a cool environment without exposure to the sun.



2. How to inspect harness on

 Carry out inspection at least every month.



1. Checking the condition of the straps.
2. Checking the condition of the swelling.
3. Checking the condition of the adjustment buckle.
4. Checking the attachment point.



WARNING!

If there is any inspection failure or doubt, the harness must be disconfigured and discarded.

1. Checking the condition of the straps.

Check for cuts, damage and wear to use to heat, and to contact with chemicals. Check the waistbelt straps, legs loops shoulder straps. Be sure to check the areas hidden by the buckles.

2. Checking the condition of the swelling.

Check the condition of safety stitching on both sides. Look for any threads that are loose, worn, or cut. The safety stitching is identified by thread of a different color than of the webbing.

3. Checking the condition of the adjustment buckle.

4. Checking the attachment point.

Check the condition of the metal
(cracks, wear, deformation, corrosion...)

3. Manutention

Any maintenance or modification to the HARNESS is prohibited, If necessary, contact TASK company.

www.taskbr.com 



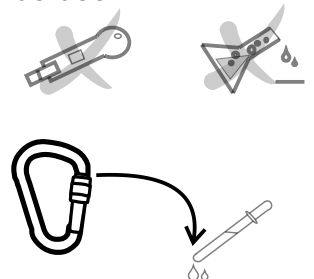
WARNING!

All information in this manual must be made to avoid serious problems.

5. Precaution

Avoid using blades and chemicals near the equipment.

For carabiners, adequate lubrication must always be use.



5. Complementary points

Rescue Straps.

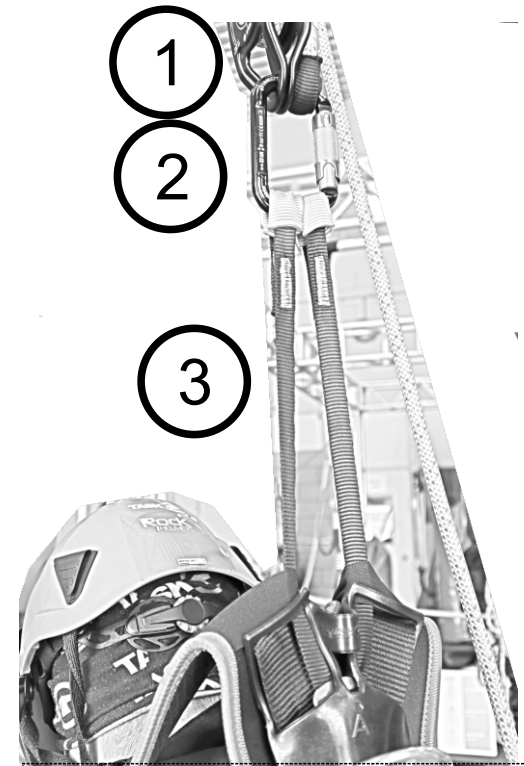
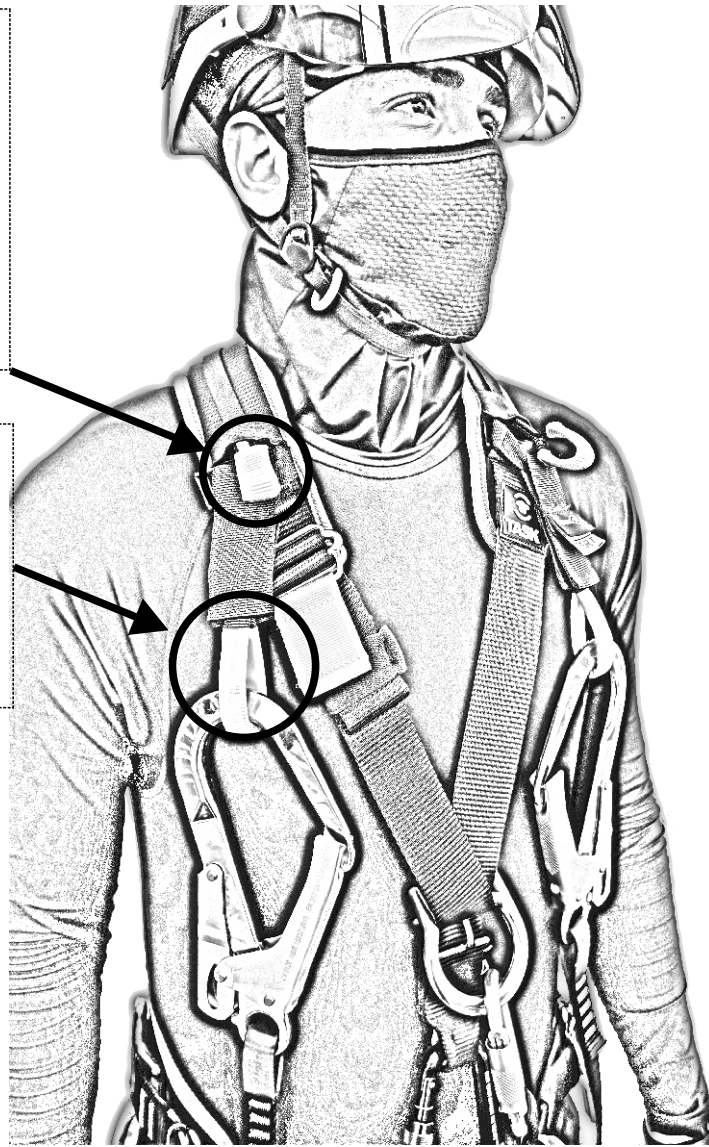
This point is exclusively for use in rescue situations where the victim must be pulled up by the shoulders.

Example: victims who are trapped in confined spaces with access only to the upper part of the body.

Fall arrest lanyard connector holder.

This point is exclusively for use placing lanyard connector or carabines, supports up to 5kg.

It has an anti-tangle system.



- 1 - Attachement point
- 2- Conector.
- 3 - Rescue straps