



TC-0031 (S) | TC-0029 (ML) | TC-0030 (XL)

## SAFETY HARNESS X-TREME II®

- ✓ Double and high padding (23cm) in the lumbar region that provides extreme comfort and stabilization
- ✓ Noble metallic material (stainless steel and aluminum), buyers satisfied with the corrosion resistance – 100%
- ✓ INOX buckles - exclusive AC® system, patented, cylindrical bar buckle double with angled crown
- ✓ Exclusive and intelligent FIT FIX® system, in stainless steel for connecting the ventral blocker
- ✓ It has 6 anchor points, extremely light and resistant to corrosion – 100%
- ✓ Yellow ribbons at the points of adjustments to facilitate the adjustments
- ✓ Four material holders in yellow (contrasting color) and a backpack holder, versatile and easy to use
- ✓ It has three sizes: S, M, and XL


# Description

The X-TREME II® is a parachutist-type safety harness, personal protective equipment used in a SPIQ (personal fall protection system). With 6 connection points in noble metallic material (stainless steel and/or aluminum), 2 for fall arrest, 2 for positioning, 1 ventral and 1 for movement restriction (textile). It has double and high padding, measuring 23cm in the lumbar region, developed to provide a perfect fit between the user and equipment, guaranteeing extreme comfort and stabilization of the lumbar spine for long-term operations.

It has an exclusive, patented AC® system, a double cylindrical bar buckle with an angled stainless steel crown, on both sides. Ideal for technical rescue, rope access, evacuation, positioning, working at heights and confined spaces, it has a low center of gravity, ideal for these activities. With 4 material holders structured in yellow, 1 central backpack holder, carabiner with Keylock system and FIT FIX® System for easy connection of the ventral blocker, it has 8 adjustment buckles.

Its tapes are made with material that retards flames when in contact with the belt, ideal for electricians, firefighters and professionals who are subject to this risk.

# Highlights



**1** Double and high padding (23cm) in the lumbar region

**2** Noble metal material (stainless steel and aluminum)

**3** 6 light and resistant anchor points

**4** Reinforced padding on the shoulders and double padding on back and legs

**5** FIT FIX® - intelligent stainless steel system for connecting the ventral blocker

**6** Stainless steel buckles - patented AC® system

**7** Four material holders and one backpack holder

**8** Aluminum connector, with Keylock system and 27mm opening

## Technical description

Parachutist type safety harness, certified in accordance with CA 38495 and approved by national technical standards ABNT NBR 15835:2020 and ABNT NBR 15836:2020 for use as an integral part of an individual protection system against falls of the movement restriction, fall arrest type, work positioning, evacuation, work at heights, rope access and vertical technical rescue.

The X-TREME II® is a harness made entirely of polyester tapes with electronic polyamide seams. It uses noble metallic material (stainless steel and/or aluminum), with corrosion resistance – 100%, 6 extremely light and resistant anchor points with a resistance load of 22kN (chest, dorsal, sides and restraint).

It has INOX buckles - Exclusive AC® system. Patented, it has a double cylindrical bar buckle with an angled stainless steel crown, on both sides. There are no right angles in the compression of the tape. Greater durability. It does not lose tension in adjusting to the body even when the person walks. Don't cut the ribbons! And they guarantee precision in adjustments! Less tape wear! Prevent side twists!

The X-TREME II® padding was developed to offer extreme comfort and stabilization for users, the lumbar region has double padding with a height of 23cm, and the shoulder and leg region has reinforced padding, both built in EVA foam. Its upper Y-shaped back construction has double height adjustment through AC® system stainless steel adjustment buckles, one on the front and the other on the back of the belt.

The X-TREME II® harness is ideal for long-term suspension operations.

For its ventral closure, the X-TREME II® has a connector with a Keylock system and a 27mm opening. Its upper front part also has the exclusive FIT FIX® system made of stainless steel located at the height of its A2 connection point, for mounting ventral elevators intended for rope access techniques.

To use the chest blocker, it is necessary to use a quick mesh, ideally a 10mm delta TRIANGLE quick mesh, made of steel, with a 10mm thread opening.

To adjust it, the X-TREME II® has 8 stainless steel buckles in the AC® system, legs, leg height, chest and back and a buckle for attaching a strap to the lumbar area. For transporting light equipment and tools, the X-TREME II® has 4 structured material holders in yellow (contrasting color), with capacity for up to 10kg each. Built with a molded tubular Nylon frame to facilitate the use of the equipment, thus ensuring greater safety, resistance and durability. For carrying backpacks, the X-TREME II® has a flat strap between the legs to facilitate the connection of backpacks in activities on sailor ladders or suspended operations, where it is not possible to carry the backpack on your back.

Its tapes are made with material that retards flames when in contact with the belt, ideal for electricians, firefighters and professionals who are subject to this risk.

## Technical advantages

-  Developed for technical rescue, rope access, evacuation, work in heights and confined spaces, it has a low center of gravity, ideal for those activities
-  Double and high padding, with 23cm in the lumbar region to provide a perfect fit between the user and equipment, guaranteeing extreme comfort and stabilization of the lumbar spine for long-term operations at height
-  Developed with noble metallic material (stainless steel and aluminum), buyers are satisfied with its corrosion resistance – 100%
-  FIT FIX® system for fixing the ventral blocker, compatible with all blocker models on the market
-  AC® System - patented, has a double cylindrical bar buckle with stainless steel angled crown, on both sides, no right angles when compressing the strap, with greater durability
-  Does not lose tension in adjusting to the body even when the person walks
-  Stainless steel buckles with AC® system that facilitate quick adjustment to body morphology
-  3 sizes (S, ML and XL), with innovative identification system, for people weighing up to 150kg
-  Anchor points (front and back) for fall arrest systems with additional "A" marking
-  QR code to access documentation

## Certifications

### EQUIPMENT

X-TREME II®

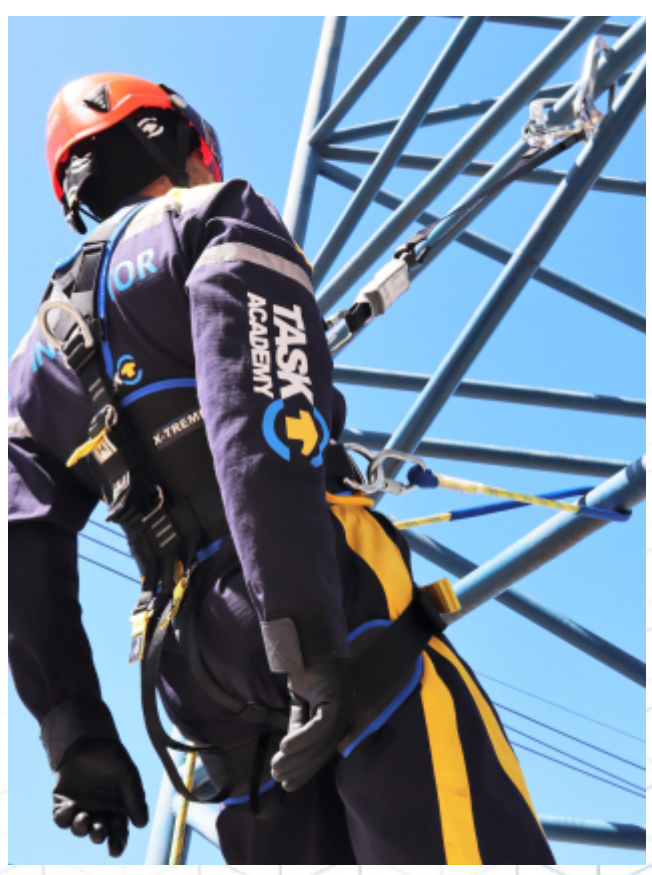
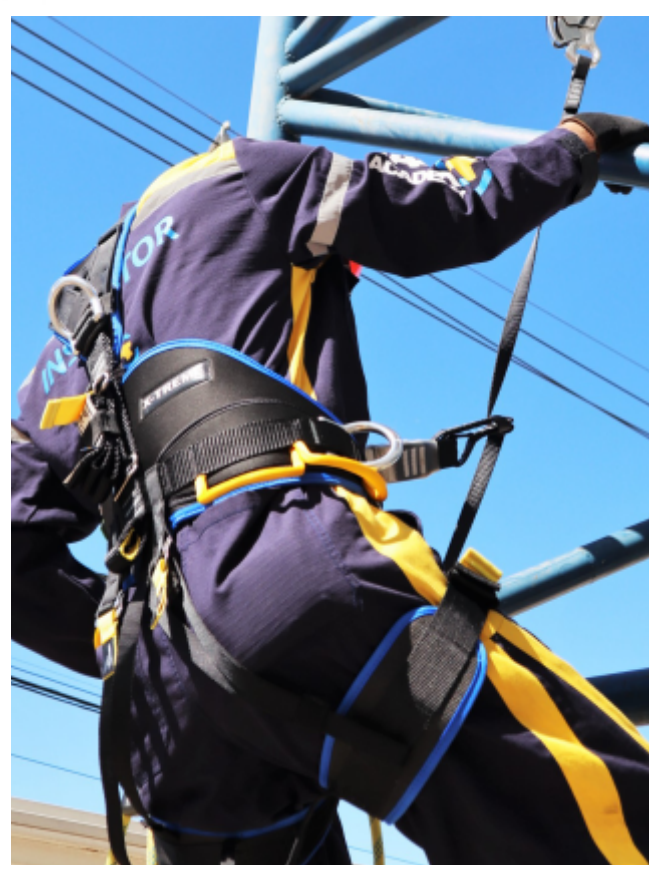
### NORMATIVE

ABNT NBR 15835:2020 | ABNT NBR 15836:2020

### CA

38495

Gallery





# Measurements and materials

Product name:	X-TREME II®				
Product code:	TC-0031 (S)   TC-0029 (ML)   TC-0030 (XL)				
Dimensions:	<b>SIZES</b>	<b>Leg (B)</b>	<b>Lumbar (A)</b>	<b>Suspender ©</b>	<b>Weight</b>
	S	50 - 65	65 - 100	100 - 125	2,400kg
	ML	55 - 75	75 - 120	105 - 130	2,500kg
	XL	55 - 80	85 - 140	110 - 135	2,600kg
Material:	Polyester, aluminum and stainless steel				
Lifespan:	Maximum duration of 10 years from the date of manufacture in the event of normal and appropriate use and when stored in acceptable conditions				
Warranty:	1 year against manufacturing defects NOTE: The equipment is produced with high-tech materials, made in Brazil with 100% quality and safety				
Capacity:	Users weighing up to 150kg				
Color:	Black with blue and yellow details				

## Applications

The X-TREME II® safety harness is intended for personal protection systems for restricting movement, arresting falls, positioned work and work suspended on ropes, applicable for professionals who perform work at various heights and progressions in vertical structures.

Ideal for vertical technical rescue, rope access, evacuation, positioning and working at height, such as on fixed ladders, roofs and access to confined spaces.

# Related products

QUICK UP



TB-0005

TRIANGLE



TM-0020

REACTOR 55



TB-0022

REACTOR 110



TC-0026

SITE



TC-0024

LUCK



TC-0020

STEEL



TB-0012

RELOCK 10



TB-0029



## FAQ

### WHAT ARE THE BENEFITS OF A DOUBLE AND HIGH PADDING IN THE LUMBAR REGION?

The double padding with a height of 23cm in the lumbar region helps stabilize the region and better distributes compression during use. Extreme comfort regardless of the user's size. The X-TREME II® belt is ideal for users looking for extra comfort.

### FOR WHAT TYPES OF ACTIVITIES CAN I USE THE X-TREME II®?

The X-TREME II® harness is ideal for technical rescue work, rope access, evacuation, positioning, work at heights and confined spaces, as it has a low center of gravity.

### WHERE IS THE INMETRO LABEL?

The INMETRO label on the X-TREME II® is located on the back, on the torso adjustment strap.

### DOES THIS HARNESS HAVE CA?

Yes. The X-TREME II® has CA 38495. Issued in 2016.

### HOW MANY AND WHAT ARE THE HARNESS ADJUSTMENT POINTS?

The X-TREME II® has 8 stainless steel buckles for adjusting the waist (2), legs (2), adjusting the height of the legs (2), chest (1), back (1) and one (1) buckle for passing tape on the lumbar spine.

### DOES THE X-TREME II® HAVE COMPATIBILITY WITH THE SAME EQUIPMENT THAT WAS USED IN THE X-TREME, FOR EXAMPLE, FALL ARRESTS, LANSIES, DESCENDERS AND ASCENSORS?

Yes. Any models of sliding or retractable fall arresters and fall arrest or restriction or positioning lanyards can be used, as long as they are manufactured by TASK, for reasons of CA compatibility. For the use of ascenders and descenders, the X-TREME II® is compatible with any model of this equipment, regardless of its manufacturer.

### WHAT IS THE LIFESPAN OF THE HARNESS?

The manufacturer informs that the duration of the X-TREME II® belt under normal circumstances and according to its proper use, and stored in ideal conditions, can reach 10 years, with 5 years after its manufacture being stored, and 5 years when put into operation.

### QUICK MESH AND CHEST BLOCKER COMES TOGETHER WITH THE HARNESS?

No, these devices are sold separately.

### IF A FALL OCCURS WITH THE HARNESS, WHAT SHOULD I DO?

According to NR 35 - 35.5.2.3, PPE, accessories and anchoring systems that present defects, degradation, deformation or suffer impacts from falling must be rendered unusable and discarded, except when their restoration is provided for in national technical standards or, in their absence, international standards.

### HOW DO I KNOW THE YEAR OF MANUFACTURE/BATCH AND THE TRACEABILITY NUMBER?

The traceability label on the harness follows the TASK standard individual number, month and year (the last four numbers).

### WHERE IS THE QR CODE?

The QR code of the X-TREME II® harness is located together with the traceability code on the back on the torso adjustment strap.

### WHAT TYPES OF CONNECTION DOES THE HARNESS OFFER?

The X-TREME II® harness has 6 connection points (hitching elements) for sliding rope or steel cable fall arresters (chest point), retractable fall arresters (chest and dorsal points), positioning lanyards (sides) and descenders or cow's tails (ventral point) and 1 point for restriction.

### IS THE HARNESS CERTIFIED FOR WORK INVOLVING ELECTRIC ENERGY OR WORK WITH HIGH TEMPERATURES?

No. It is approved for normal conditions of use in the types of work in general that require fall protection PPE. Our certified harness for operations involving electrical energy is IZFOURE®.

### IS IT COMPATIBLE WITH ANY INTERNATIONAL STANDARDS?

Yes. The X-TREME II® harness is compatible with EN 358:2000 and EN 361:2002 standards.

### WHICH CONNECTOR SHOULD I USE ALONG WITH THE CHEST BLOCKER?

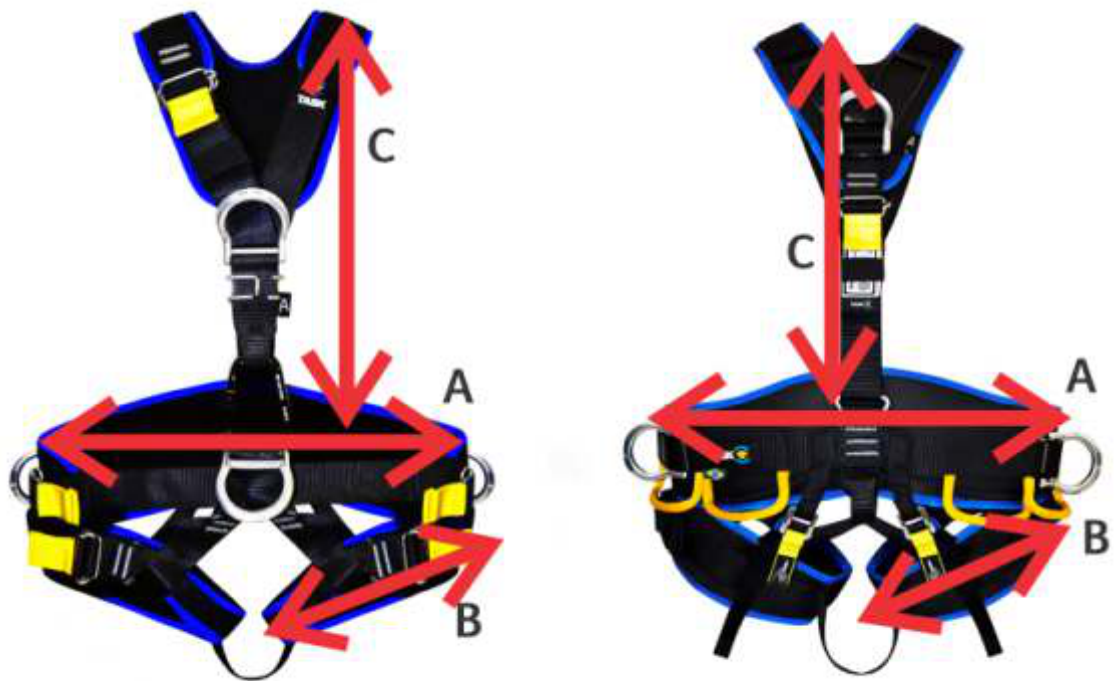
The recommended one for use with the chest blocker is the 10mm TRIANGLE quick mesh connector (TM-0020).

## HOW TO MEASURE HARNESS SIZE?

The harness size must be checked as follows:

SPOT	MINIMUM-MAXIMUM	METHOD
Legs	Minimum	Pull the tape to close the diameter of the leg. The buckle tip must remain 1 cm from the beginning of the double bar.
	Maximum	Pull the tape to open the diameter of the leg. The buckle tip must remain 1 cm from the beginning of the double bar.
Waist	Minimum	Pull the tape to close the waist diameter. The buckle tip must remain 3 cm from the beginning of the ventral connection.
	Maximum	Pull the tape to open the waist diameter. The buckle tip must remain 1 cm from the beginning of the double bar.
Suspender	Minimum --	The adjustment must be made so that the ring back is centered between the armpits and shoulders.

**A:** waist  
**B:** legs  
**C:** suspender



BUY NOW!

ACCESS OUR SITE

**TASK VOTORANTIM**  
Av. Rogério Cassola, 896  
Itapeva - Votorantim - SP  
18116-709 - Brasil  
+55 (15) 3034-8000  
comercial@taskbr.com

